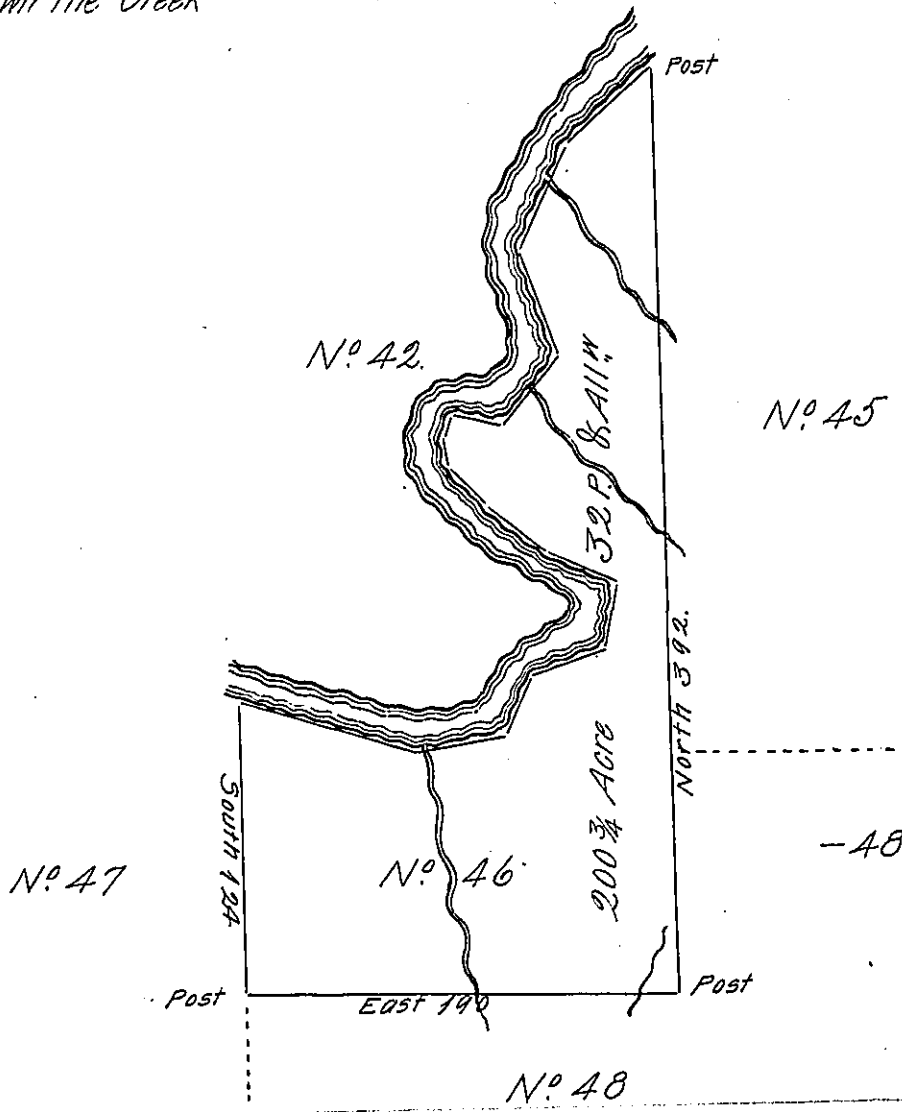


✓

Courses and distances down the Creek

- Viz: S 48° W. 49.
 - S 25° W. 50
 - S 21° E. 53½
 - S 40° W. 40
 - N. 82° W. 23.
 - S. 13° W. 8
 - S 7° E 10
 - S 48° E 20
 - S 52° E. 34
 - S 67° E 33
 - S 17° W. 29
 - S 73° W 37.
 - S 22° W. 28
 - S 80° W. 42
 - N 73° W 81.
- about 537½ P^s



Situate on the South side of Connoughtqueanneasing Creek in that Part of District N° 3 to me Allotted on the north side of the River Ohio being Part of the Land Appropriated for the Redemption of the Certificates of depreciation & c^o Surveyed in June 1785. Pursuant to Instructions from Jn^o. Lukens Esq^r. Surveyor Gen^l. dated at Philad. the 5th day of March 1785.

Nat^l. Breeding D.S.

IN TESTIMONY that the above is a copy of the original remaining on file in the Department of Internal Affairs of Pennsylvania, made conformably to an Act of Assembly approved the 16th day of February, 1833, I have hereunto set my Hand and caused the Seal of said Department to be affixed at Harrisburg, this fourteenth day of November 1905.

James B. Breeding
 Secretary of Internal Affairs.